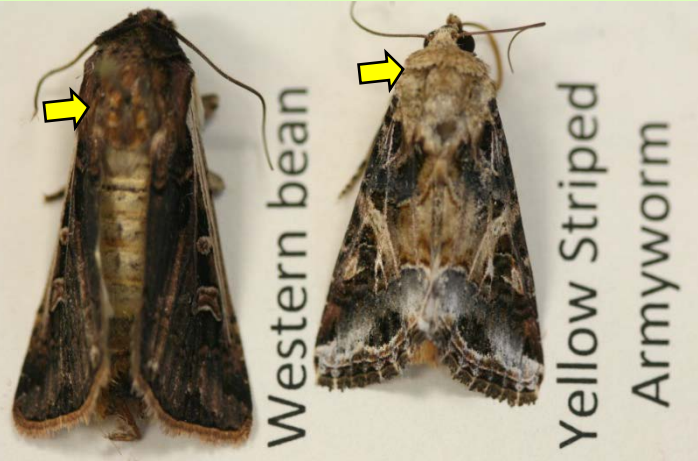


Distinguishing western bean cutworm & yellow striped armyworm in pheromone traps

Chris DiFonzo, Field Crops Entomologist, East Lansing, MI

CDD #49 2018



The yellow striped armyworm may be attracted to WBC pheromone lures, and in some weeks this species can make up a significant portion of trap catch. However, it is relatively easy to distinguish from WBC by size and wing pattern.

WBC

- dark thorax and head (above)
- dark wing w/ a yellowish-white front margin, circle and crescent
- in death, wings often 'messy', held open a bit

YSAW

- white thorax and head (above)
- usually smaller than WBC
- wing with dark and yellowish-white patterning, and a large bright-white band
- in death, wings usually together, triangular

