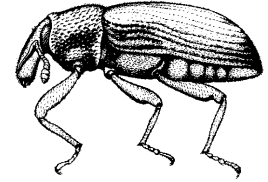


RUTGERS
New Jersey Agricultural
Experiment Station



POSTDOCTORAL ASSOCIATE IN ENTOMOLOGY IPM of turfgrass insects

Job Description: Conduct laboratory, greenhouse, and field studies on IPM of the Annual Bluegrass Weevil (ABW) and the white grub complex in turfgrass. Postdoc will work closely with PI and other members of program on ongoing and new projects. Ongoing projects involve improving monitoring/sampling methods, pest biology, biological / microbial control, insecticide resistance and its management. Involvement in other projects related to turfgrass insects, especially involving insect pathogens, is also possible. Grant proposal development and some extension activities are expected.

Qualifications: Ph.D. in entomology or closely related areas. Outstanding candidates with experience in fieldwork, insect pathogen ecology and application, entomology, and/or turfgrass are encouraged to apply.

Salary: \$45,600-50,000 (dependent on experience).

Time Frame: 1-year appointment beginning ideally between January and March 2019 with option for renewal up to 3 years with satisfactory progress.

Location: Department of Entomology, Rutgers University, New Brunswick, NJ.

Contact: Dr. Albrecht Koppenhöfer (a.koppenhofer@rutgers.edu). For details on the department and Dr. Koppenhöfer's program see <https://entomology.rutgers.edu/> .

Application: Candidates need to apply through below link where additional info on position is also available: <https://jobs.rutgers.edu/postings/77880>

Rutgers University is an equal access/equal opportunity/affirmative action employer.*

Some related links:

Rutgers University: <https://www.rutgers.edu/>

Rutgers University, New Brunswick: <http://nb.rutgers.edu/>

Rutgers School of Environmental and Biological Sciences: <http://sebs.rutgers.edu/>

Rutgers Center for Turfgrass Science. <http://turf.rutgers.edu/>

New Brunswick: <http://www.newbrunswick.com/>

http://en.wikipedia.org/wiki/New_Brunswick,_New_Jersey

New Jersey: http://en.wikipedia.org/wiki/New_Jersey

In addition to being one of the best places in the world to conduct turfgrass research, Rutgers is situated in the middle of one of the most culturally rich and diverse and historical areas of the country: 1 h to downtown NYC or Philadelphia, around 4 h to Boston or Washington DC. New Jersey public schools rank among the top in the nation and the region has some of the best health care facilities in the USA. Despite its small size, NJ has quite diverse geography, landscapes, and agriculture, and is within a few hours drive of pristine and breathtaking natural areas in New York and Pennsylvania.