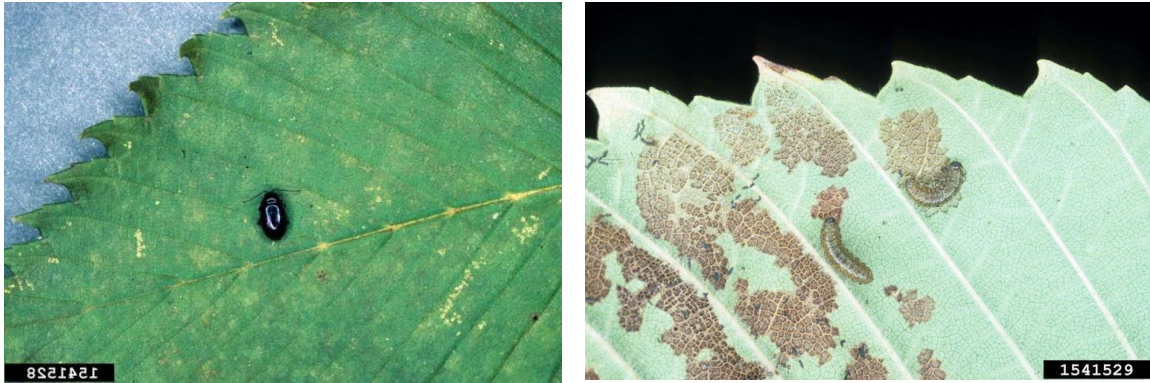


## Pest Profile



**Photo credit:** Lacy L. Hyche, Auburn University, Bugwood.org

**Common Name:** Strawberry Flea Beetle

**Scientific Name:** *Altica ignita*

**Order and Family:** Coleoptera, Chrysomelidae

**Size and Appearance:**

	<b>Length (mm)</b>	<b>Appearance</b>
<b>Egg</b>	1-2mm	Yellowish-brown and oval shaped
<b>Larva/Nymph</b>		Brown with black head capsule
<b>Adult</b>	3.2-3.7mm	Shiny, metallic blue with a purple tinge. Elytra studded with small indentations
<b>Pupa (if applicable)</b>		

**Type of feeder (Chewing, sucking, etc.):** Chewing mouthparts

**Host plant/s:** Primarily strawberry and evening primrose

**Description of Damage (larvae and adults):** Feeding damage is typical for flea beetles that feed on foliage. Both adults and larvae feed on leaves but larvae will also feed on the fruit. Large numbers can defoliate plants, reducing the plants ability to photosynthesize and thereby reducing fruit production.

**References:**

Balsbaugh, Jr, E. U., & Hays, K. L. (1972). The Leaf beetles of Alabama (Coleoptera: Chrysomelidae). *Agricultural Experiment Station Bulletin*. Auburn University.

Burrack, H. (2012, April 5). What to watch for: Flea beetles in the strawberries? Retrieved from: <http://ncsmallfruitsipm.blogspot.com/2012/04/what-to-watch-for-flea-beetles-in.html>

Phillips, E. F., & Gillett-Kaufman, J. L. (2019). Flea beetles of the genus *Altica*. *Featured Creatures*. University of Florida.